

# Lift or Curl?

## The differences



### Eyelash Lift

**Method:** The eyelashes are fixed in a flat and upwards position on the lifting pad. The result is a straight lift of the eyelashes.

**Result:** Significantly longer and fuller looking eyelashes. A slight curl is created, but not as strong as with Eyelash Curl.

Can be applied to different lengths of eyelashes. Best results for medium to long lashes.

Lasts up to 6 weeks

Duration of application: 30 minutes



### Eyelash Curl

**Method:** Method: The eyelashes are positioned and curled around an eyelash roller. A crescent moon-shaped curl is created.

**Result:** Evenly curved eyelashes. Replaces the mechanical eyelash curlers. No visual extension of the eyelashes.

Best result for short to medium eyelashes.

Lasts up to 6 weeks

Duration of application: 30 minutes

# Eyelash Lift

RefectoCil Eyelash Lift lifts lashes up in doing so, creates an intense, wide-eyed look, making your natural lashes look significantly longer and thicker.



**Service duration: 30 min**

#### Application time:

Lashperm: 8 minutes  
Neutralizer: 5 minutes  
Colour: 2 minutes

**Durability of the result: up to 6 weeks**

#### Shelf life of the products:

Lashperm: 2 months after opening  
Neutralizer: 2 months after opening  
Glue: 3 months after opening

Close the tubes immediately after each use and make a note of the opening date.

Our products are marked no. 1 and no. 2 on the tubes, brushes and cosmetic bowls. Use a clean brush and cosmetic dish to apply each of the two lotions. The contact between Lashperm (1) and Neutralizer (2) leads to a chemical reaction, which renders the products ineffective.

Our glue is based on a water-soluble formula and is latex-free, making it very gentle for use on skin and hair.

The unique formula, containing collagen and cysteine, works in JUST 13 minutes. The especially developed lifting pads, made in Germany, fit along the curvature of the lid perfectly, are available in 3 sizes, and can be reused up to 100 times. Lashes can be tinted immediately after the lifting treatment.

# 04 THE TREATMENTS\_

## Step by Step



1

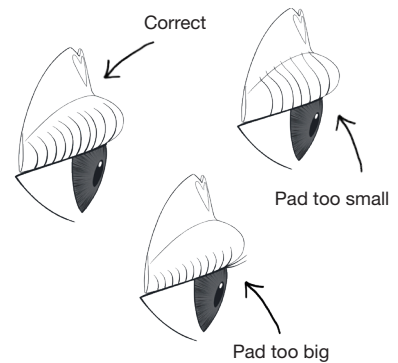
### Preparation

Remove contact lenses before beginning. Cleanse the eye area with RefectoCil Micellar Eye Make-up Remover and then degrease the eyelids and eyelashes with RefectoCil Saline Solution.



2

For an easier application, cover the lower lashes with RefectoCil Eye Care Pads or Silicoe Pads. This ensures only fixing the upper lashes to the lifting pad.

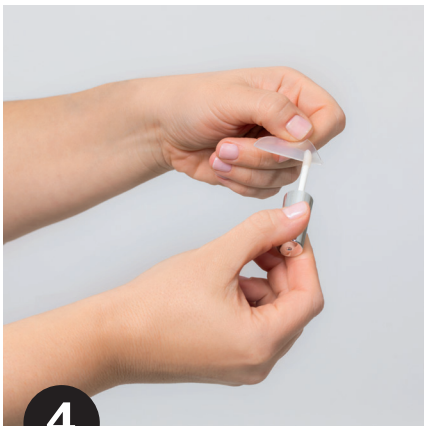


3

### Select Lifting Pads

The shorter the lashes and the stronger the lifting effect desired by the customer, the smaller the pad size should be.

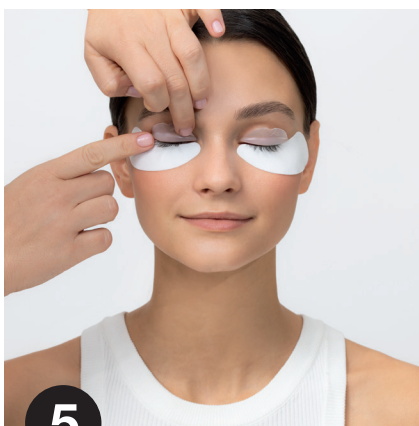
S: strong lifting effect;  
especially for short lashes  
M: natural lifting effect;  
for medium-length lashes  
L: discreet lifting effect;  
for very long lashes



4

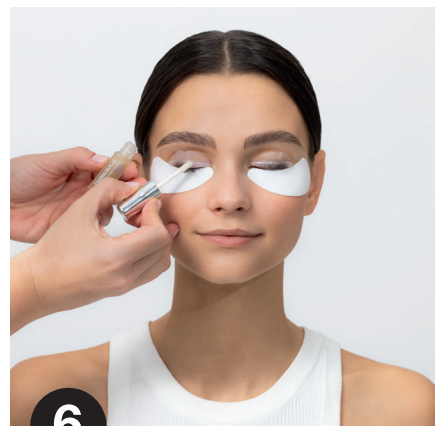
### Fixing Lifting Pads

Apply sufficient glue to the back of the lifting pads - allow to dry briefly.



5

Stretch the eyelid with your fingers and place the lifting pad on the edge of the eyelid, as close to the base of the lashes as possible.



6

### Fixing lashes

Now apply a little glue to the curvature of the lifting pads - allow to dry briefly. Fix the upper lashes with the Eyelash Lifter.



7

Using the flat side of the Eyelash Lifter, sweep the lashes up straight and evenly onto the lifting pad.



8

If individual lashes cross each other, carefully loosen them with the tip of the Eyelash Lifter and reposition them straight onto the lifting pad. For unruly lashes or those that come loose, apply a little more RefectoCil Glue and fix the lashes again.



9

When all the lashes are stuck to the lifting pad, ask the client to open their eyes briefly to ensure that no lower lashes have accidentally stuck to the lifting pad. If so, loosen and release them carefully with the Eyelash Lifter.



10a

### Lashperm

Place a pea-sized amount of RefectoCil Lashperm 1 into the RefectoCil Cosmetic Dish 1. Using the RefectoCil Cosmetic Brush 1, apply a strip of **Lashperm 1** saturating the middle area of the lashes.



10b

**Application time: 8 minutes**



10c

After the application time, remove Lashperm 1 with a dry cotton swab.

The next steps can be found on the following page.





11a

### Neutralizer

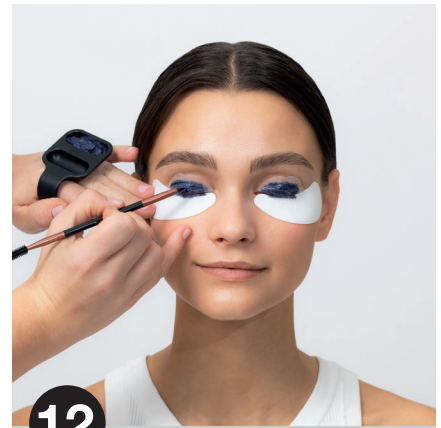
Place a pea-sized amount of RefectoCil Neutralizer 2 into the RefectoCil Cosmetic dish 2. Using the RefectoCil Cosmetic Brush 2, apply a strip of Neutralizer 2 saturating the middle area of the lashes.



11b

### Application time: 5 minutes

After the application time, remove Neutralizer 2 with a dry cotton swab.



12

### Eyelash tinting

Now the lashes can be tinted with RefectoCil tints. Apply directly to the lashes on the lifting pads. **Application time is reduced to only 2 minutes!**

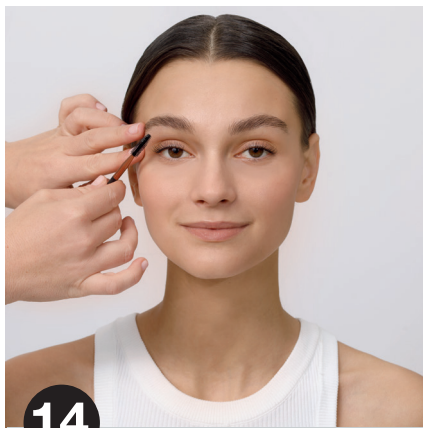
**Tip:** To avoid colour stains on the Lifting Pads, rinse immediately after tinting.



13

### Removing Lifting Pads

Remove the tint with a damp cotton pad. Rub a damp cotton pad over the lashes several times: the moisture loosens the glue. Stretch the eyelid and remove the lifting pads from the outside in.



14

### Care

For optimal care, apply RefectoCil Styling Gel. With daily use, it intensively nourishes, strengthens and cares for the eyelashes, giving them a wonderful shine.

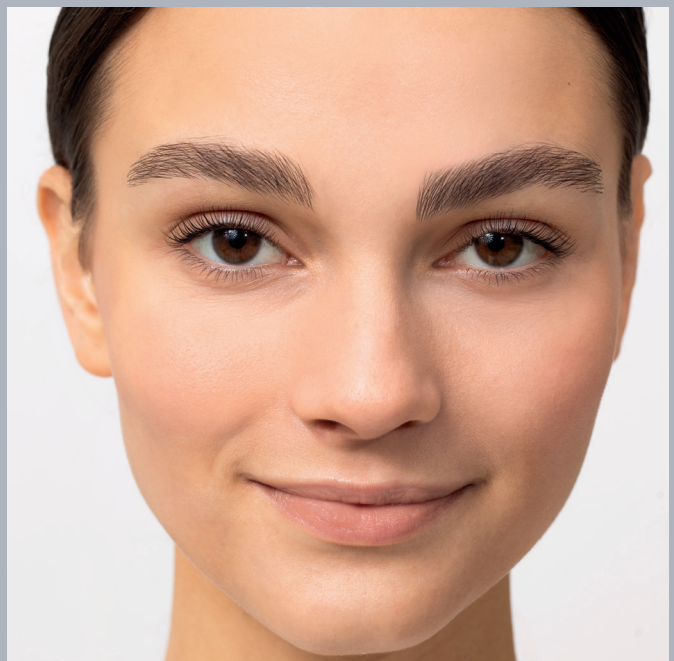
**The result: Longer and fuller looking lashes in just 13 mins!**

The effect lasts up to 6 weeks.

Before










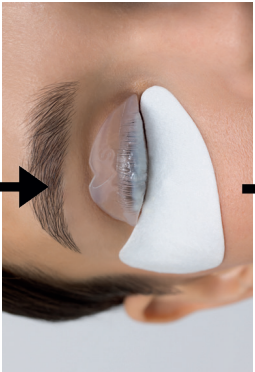



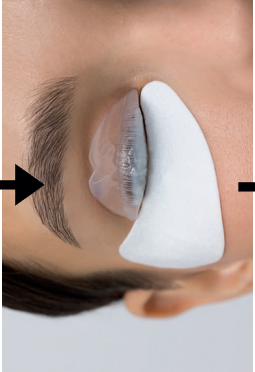






After



# RefectoCil

## CHEAT SHEET - EYELASH LIFT

| Step | Step Name        | Duration | Image 1   | Image 2   | Image 3  | Image 4   |
|------|------------------|----------|---|---|--|---|
| 1    | Preparation      |          |  |  |  |  |
| 2    | Fixing eyelashes |          |  |  |  |  |
| 3    | Lashperm         | 8 min.   |   |   |   |   |
| 4    | Neutralizer      | 5 min.   |    |    |    |    |
| 5    | Tint & Care      | 2 min.   |    |    |    |    |



**EYELASH CURL  
by ReflectoCil**

*Aftercare*  
for 24 hours after

**EYELASH LIFT  
by ReflectoCil**



No mascara or  
any eye make-up



Don't go  
swimming



Don't rub  
your eyes



Keep your  
lashes dry



Sleep on  
your back or side



Handle with care



Avoid hot steamy  
showers or saunas



No lotions, oils  
or creams



Don't use oil-based  
products



Schedule your next  
appointment

**EYELASH CURL  
by ReflectoCil**

*Aftercare*  
for 24 hours after

**EYELASH LIFT  
by ReflectoCil**



No mascara or  
any eye make-up



Don't go  
swimming



Don't rub  
your eyes



Keep your  
lashes dry



Sleep on  
your back or side



Handle with care



Avoid hot steamy  
showers or saunas



No lotions, oils  
or creams



Don't use oil-based  
products



Schedule your next  
appointment

**EYELASH CURL  
by ReflectoCil**

*Aftercare*  
for 24 hours after

**EYELASH LIFT  
by ReflectoCil**



No mascara or  
any eye make-up



Don't go  
swimming



Don't rub  
your eyes



Keep your  
lashes dry



Sleep on  
your back or side



Handle with care



Avoid hot steamy  
showers or saunas



No lotions, oils  
or creams



Don't use oil-based  
products



Schedule your next  
appointment

**EYELASH CURL  
by ReflectoCil**

*Aftercare*  
for 24 hours after

**EYELASH LIFT  
by ReflectoCil**



No mascara or  
any eye make-up



Don't go  
swimming



Don't rub  
your eyes



Keep your  
lashes dry



Sleep on  
your back or side



Handle with care



Avoid hot steamy  
showers or saunas



No lotions, oils  
or creams



Don't use oil-based  
products



Schedule your next  
appointment